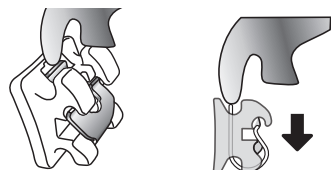


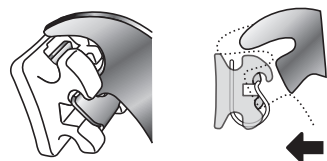
Opening Instructions

To open the self-ligating bracket spring clip:

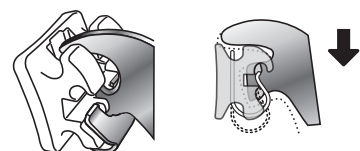
1. (Optional) Place instrument on the open clip slot directly beneath the bracket interface and gently push in the occlusal direction to disengage the bracket clip.



2. Place the instrument directly in the facial opening of the clip to engage the small extension of the spring clip.



3. Pull in the occlusal direction. The spring clip will pop open. For added patient comfort, use a finger to support the tooth and this will act as a stop when opening.



Closing Instructions

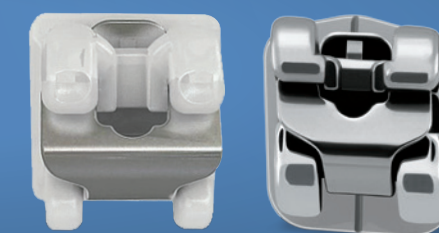
To close the self-ligating bracket spring clip, securely seat the wire, and then use simple, light finger pressure on the occlusal surface of the bracket to push closed.



Elect Bracket System Kits



BRACKET	U/L 5 X 5	.022" ITEM NO.
Elect	1 Case	308-300
Clear Elect	1 Case	309-300



Elect™

Active Self-Ligating Bracket System

ClassOne
ORTHODONTICS

Ortho Organizers, Inc.
1822 Aston Ave. • Carlsbad, CA 92008
ClassOneOrtho.com
In the U.S.: 888.851.0533
Outside the U.S.: +(1) 760 448 8600
Canada: CERUM 800.661.9567
To email an order:
Info@ClassOneOrtho.com

© 2014 Ortho Organizers, Inc. All rights reserved. PN M643 09/14.
*ClassOne's prescription does not imply endorsement by the doctor(s).

ClassOne
ORTHODONTICS

Elect Active Self-Ligating Bracket System

Providing a low-friction passive movement and controlled active sliding mechanics, as well as an advanced-technology durable clip, the *Elect* Active Self-Ligating Bracket System is designed to provide you and your practice with reliable and predictable treatments.



Clear Elect Ceramic Active Self-Ligating Bracket System

- **Made from Polycrystalline Alumina** material that blends perfectly with the natural tooth tone
- **Rhodium-coated clip** for aesthetics and reliable archwire changes
- **Ceramic Injection Molding (CIM)** results in complex structures that machined brackets cannot duplicate
- **Fine Alumina spheres** provides a patterned mechanical base for predicable debonding

Elect Active Self-Ligating Bracket System

- **Well-polished surfaces** offer an attractive appearance
- **Rounded tie-wings and smooth ball-hooks** ensure patient comfort
- **Contoured 80-gauge mesh base** for true fit with the tooth anatomy and consistent bonding
- **Advanced technology Cobalt-Nickel clip** provides reliable performance

Self-Ligation Interactive Philosophy

Orthodontic leaders have found self-ligation with an interactive system provides not only the low-friction, low-force movement needed for effective and patient-friendly treatment, but also vital, increasing active control for precise finishing with which the orthodontist and patient will be pleased.

Interactive Treatment

Passive Phase: Initial

Clip does not interact with the wire, allowing for less friction during early treatment.

- Round wires, including:
 - .014"
 - .018"



Transitional Phase: Intermediate

Clip lightly interacts with the wire, allowing the bracket wire interface to control tooth movement.

- Square and rectangular wires, including:
 - .018" x .018"
 - .020" x .020"
 - .016" x .022"



Active Phase: Finishing

Clip fully engages the wire into the bracket slot for precise finishing.

- Rectangular wires, including:
 - .017" x .025"
 - .019" x .025"



Tool Usage



Genesis-C Tool



Genesis Tool

DESCRIPTION	ITEM NO.
Metal Tool	4150-930
Ceramic Tool	4150-920

It's easy to open the brackets with the unique *Clear Elect* or *Elect* Opening Tools.

Each tool is designed specifically to fit the dimensions of the bracket for secure engagement.